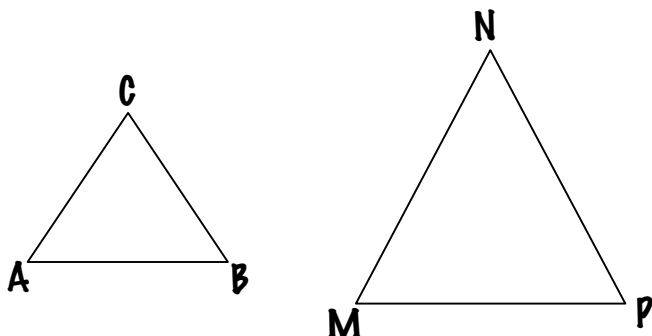


Similarity Homework - Day 1

The figures below are similar. Complete each statement.



**Helpful**

**Hint:**

Draw in  
the arc  
marks.

1)  $m\angle A = m\angle$  \_\_\_\_\_

2)  $m\angle B = m\angle$  \_\_\_\_\_

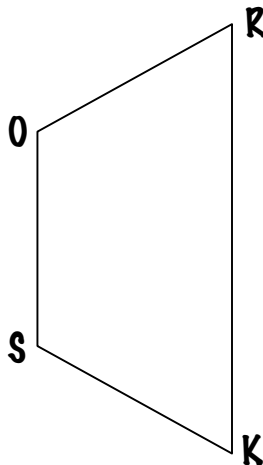
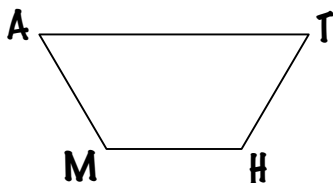
3)  $m\angle C = m\angle$  \_\_\_\_\_

4)  $\frac{AB}{MP} = \frac{AC}{?}$

5)  $\frac{AC}{MN} = \frac{BC}{?}$

6)  $\frac{NP}{?} = \frac{MP}{AB}$

7) Write a similarity statement for the triangles above. \_\_\_\_\_



8)  $m\angle M =$  \_\_\_\_\_

9)  $m\angle A =$  \_\_\_\_\_

10)  $m\angle S =$  \_\_\_\_\_

11)  $m\angle K =$  \_\_\_\_\_

12)  $\frac{AT}{RK} = \frac{TH}{?}$

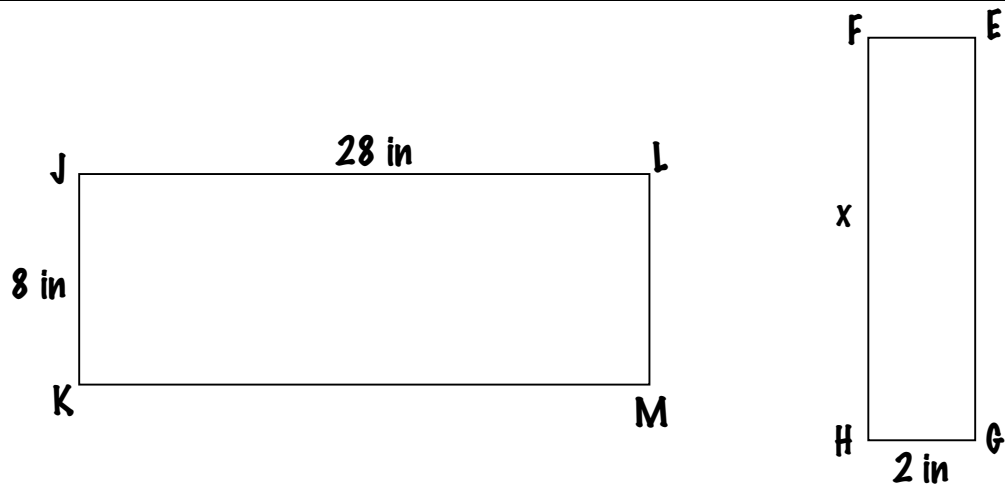
13)  $\frac{MH}{OS} = \frac{MA}{?}$

14)  $\frac{KS}{?} = \frac{?}{AM}$

15)  $\frac{RO}{?} = \frac{?}{AT}$

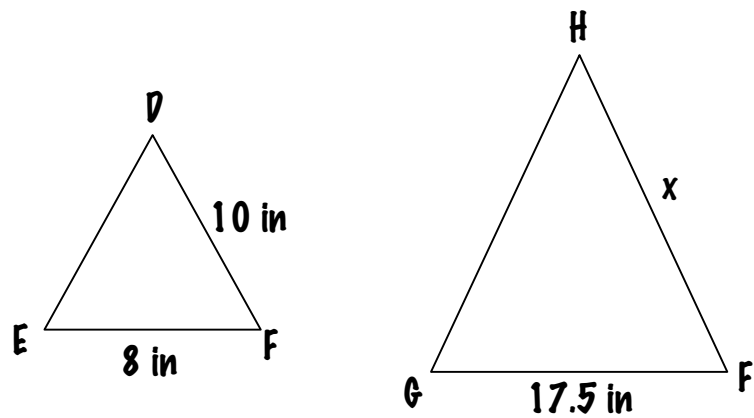
16) Write a similarity statement for the quadrilaterals above. \_\_\_\_\_

Similarity Homework - Day 2



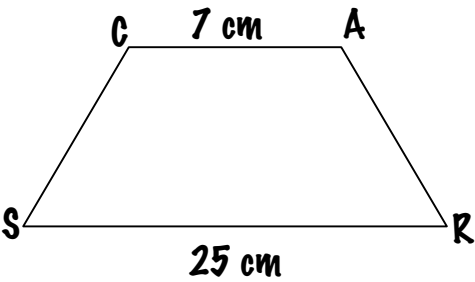
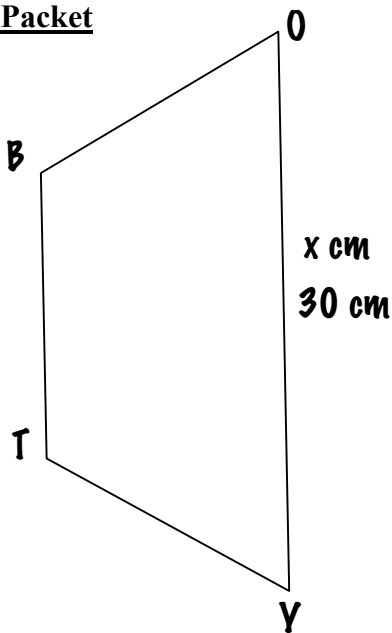
17) Write a similarity statement for the two triangles above. \_\_\_\_\_

18) Solve for  $x$ .  $x =$  \_\_\_\_\_



19) Write a similarity statement for the two triangles above. \_\_\_\_\_

20) Solve for  $x$ .  $x =$  \_\_\_\_\_

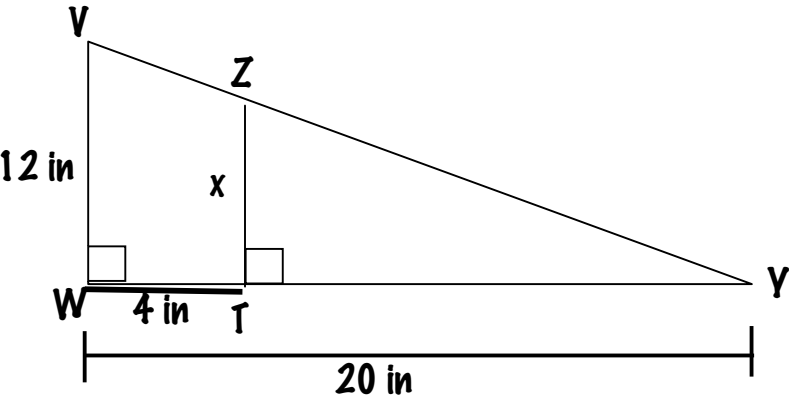


21) Write a similarity statement for the two quadrilaterals above. \_\_\_\_\_

22) Solve for x.       $x =$  \_\_\_\_\_



**Helpful**  
**Hint:**  
Draw 2  
separate  
triangles.



23) Write a similarity statement for the two quadrilaterals above. \_\_\_\_\_

24) Solve for x.       $x =$  \_\_\_\_\_